

ENERGY AND ENVIRONMENTAL MONITORING

Seamlessly integrates monitoring hardware, wireless networking, analysis and reporting into a ready to run system.

MONITORING AND ANALYSIS MADE EASY: The EMX energy portal makes it easy to access detailed power and environmental information. Using any web browser, you can quickly see your top level or detailed power and environmental data, available power infrastructure, examine usage trends across time and more. EMX also simplifies energy cost allocation and reporting with an array of standard and customizable reports.

CLOSELY INTEGRATED HARDWARE AND SOFTWARE: Packet Power provides a true end-to-end “plug and play” experience with a self configuring wireless network that effortlessly integrates with the EMX monitoring system. From the moment you energize monitors the EMX portal will automatically recognize new devices and make the data available.

THE SMART ALTERNATIVE: EMX can be online and commissioned in fraction of the time and cost of conventional BMS and DCIMs while still delivering the critical information you need to operate and optimize your data center. EMX can run as a cloud application or locally as well as operate simultaneously with conventional building management systems. See why so many enterprise customers choose EMX.

Information that delivers real value and operating efficiencies:

- ▶ Optimize available power per circuit without the risk of tripping circuits
- ▶ Generate energy savings by increasing ambient temperature while safely knowing your peak rack temperature
- ▶ Monitor and optimize air flow using low cost strategically placed pressure sensors
- ▶ Ensure compliance with customer contracts using easy to run reports
- ▶ Maintain uptime by setting policies that ensure safe operating parameters
- ▶ Accurately allocate costing by user and improve billing accuracy
- ▶ Increase PUE resolution to better gauge operating efficiency efforts
- ▶ Automate reporting and time consuming manual measurements

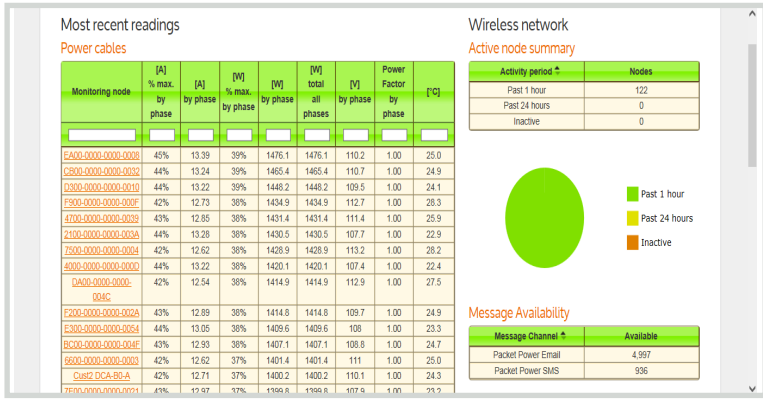
FEATURES

- ▶ Real-time power and environmental information from facility wide to device resolution
- ▶ Ready to run - no costly commissioning and integration expenses
- ▶ Supports thousands of monitoring points across multiple facilities
- ▶ Multi-company support; separate access to information for different parts of your company or customer sets
- ▶ Use as-is or customize reports, dashboards, languages and alerts
- ▶ Accessible from any web browser
- ▶ Cloud based or locally installed
- ▶ Proven globally in enterprise and co-location environments

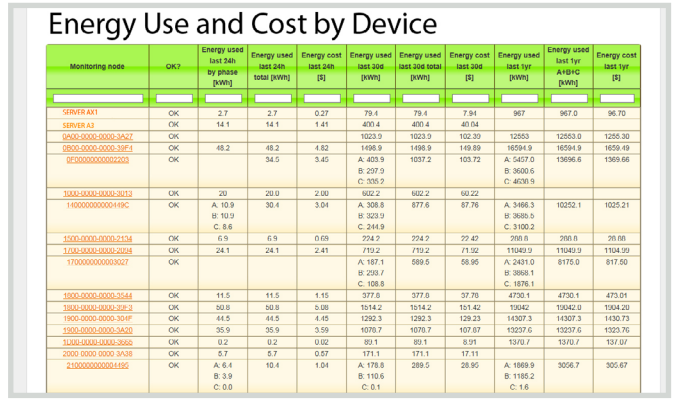
FUNCTIONS

- ▶ Set policies and receive alerts via email or SMS
 - ▶ Create custom dashboards viewable as web pages
 - ▶ 3D thermal maps
 - ▶ Detailed reporting capabilities
 - ▶ Dynamic charting and trending functions of real time and historical data
- Export data in universal formats
- ▶ Track energy usage, costing and CO₂ emissions
 - ▶ Create realistic data center diagrams and view information from a facility to device level

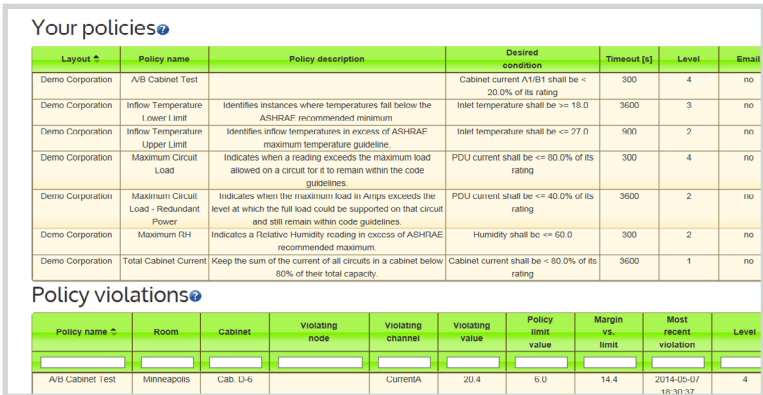
SYSTEM OVERVIEW



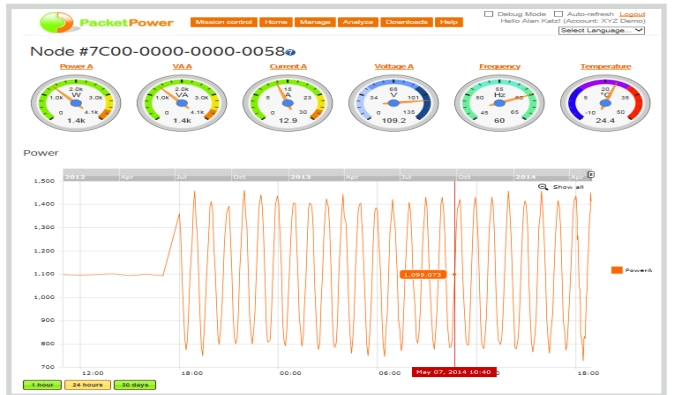
Easy to see system wide overviews: View all devices being monitored by type, location, or grouping along with system status from a central dashboard.



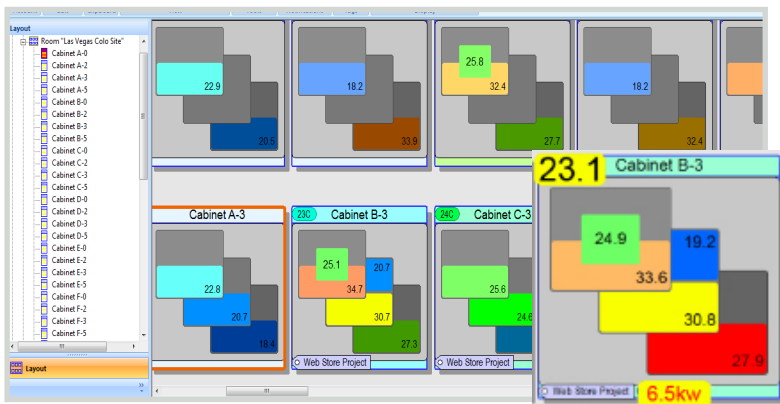
Simplify your reporting: Create energy usage and environmental reports by user, location or device along using the many standard reports or create a custom report. Report information can also be exported into universal formats.



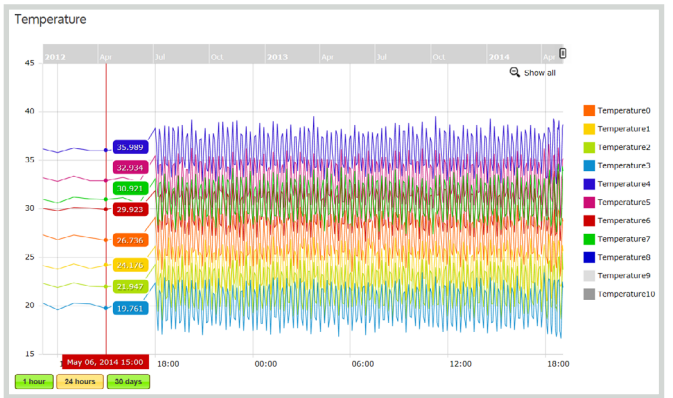
Set Policies to ensure your operating parameters: Define your policy parameters to keep your operating environment in check; any violations are logged and also can trigger email or text alerts.



Create custom dashboard web pages: Any information can be assigned to a custom dashboard which will have a unique URL and can be viewed as a web page for “at a glance” status checks.



ActiveFacility Maps: Create accurate facility maps to mimic data center layouts and get detailed information down to the cabinet level including 3D temperature maps, rack and device level power consumption and more.



Charting and Trending: Any parameter can be presented graphically to show historical or real time data and assist in data analysis.