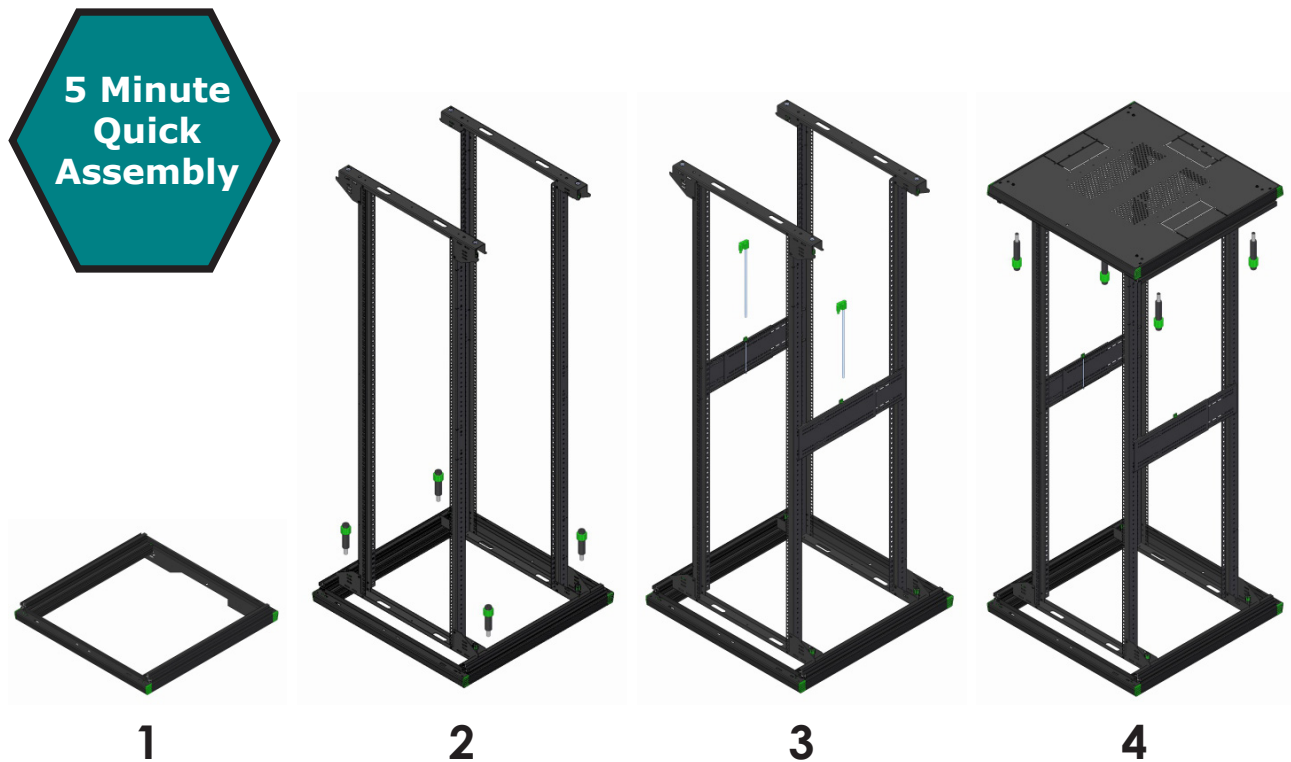


## 19" Data & Server Cabinets

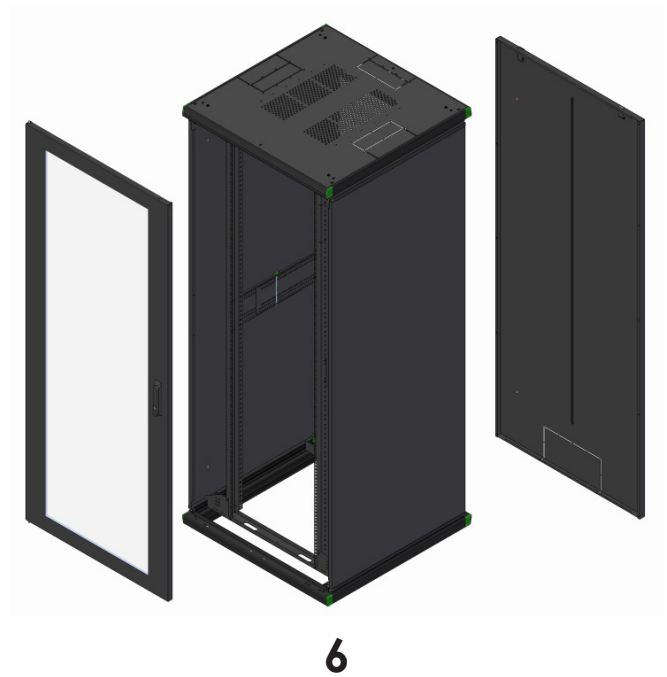
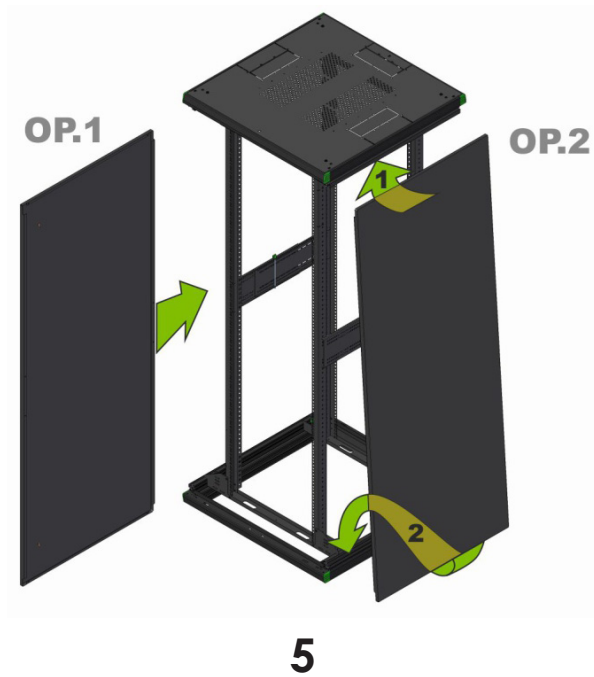


The RetO is the latest addition to the range of flat-packed 19" racks from Retex. Like the Logic2, the RetO rack can be quickly built in just 5 minutes without any tools.



### Features & Benefits

- Unique flat-pack design that can be quickly assembled in just 5 minutes, without tools, providing a secure rack solution.
- Pre-assembled components enable an "All in one box" solution.
- "All in one box" solution optimises the transportation, storage and makes for easier handling until the final destination is reached.
- Available in heights from 18U up to 47U, widths of 600mm & 800mm and depths of 600mm, 800mm, 1,000mm and 1,200mm.
- Security: One lock secures all accesses.
- Front and rear doors feature 190° opening angle. With a choice of mesh, safety glass or steel options, in either single or double door styles.
- The top and bottom rails are aluminium profiles specifically designed to carry accessories, such as vertical cable management, PDU's etc, allowing them to be fully adjustable.
- Lightweight but robust; 20% lighter than a conventional rack but with a static load capacity of 1,200Kg.



### Eco Friendly: Helps to reduce the carbon footprint

Enables a reduction of up to 70% of CO<sub>2</sub> emissions during transportation compared to an assembled rack.

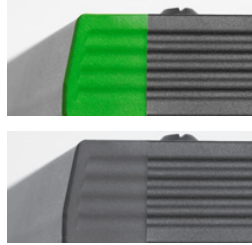
100% recyclable material.



### Coloured ABS Corner Lids

RetO racks feature coloured ABS corner lids that enable customisation and adaption to corporate image.

The different coloured corner lids also enables identification to the function of each group of racks.



### Tool-less Side Panels

RetO side panels feature a tool-less design and are installed with no screws or fixings.

Side panels can be lifted out as per conventional side panels, or by simply sliding them back and forth. This design enables the side panels to be removed even when the racks are bayed together, without the need of removing the baying kit.



### Numbered Profiles

On 42U & 47U racks the 19" rails feature numbered U height positions.

(Available as an option on other height racks).







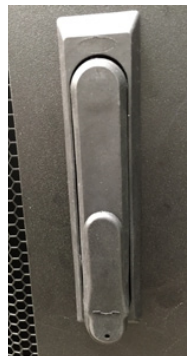
### Easy Baying

RetO features a new baying kit concept that is quick to install and requires no tools.



### Secure Locking

RetO racks feature swing handles with two locking points.

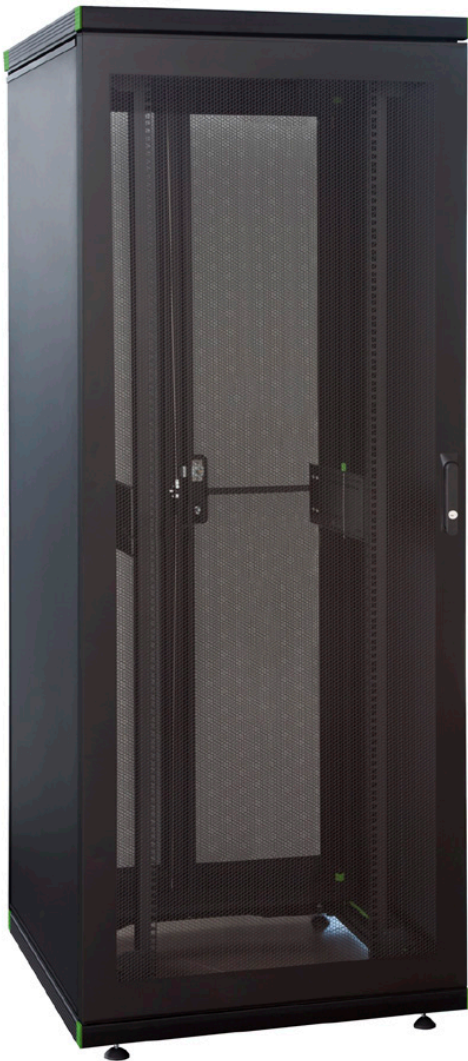


### Adjustability

The RetO features two adjustable multifunction members that provide stability, and enables the installation of accessories such as vertical cable management, PDUs etc.



The 4 x 19" profile sections are infinitely adjustable back and forth without the need of any tools. The scaled top and bottom side aluminium profiles enable accurate positioning.



All RetO 19" modular cabinets are suitable for cabling, telecommunications, IT and industrial installations. Designed in accordance with IEC60 297-1, DIN 41944 part 1 and 7, ANSI/EIA-310 D-E, and UNE 20 539-2.

### W600 (Flat-Pack)



600mm wide rack, the basic unit includes:

- Inner freestanding structure.
- Top & bottom side structure in aluminium profiles.
- 4x19" profiles adjustable in depths, manufactured from 2mm steel.
- Front door with safety glass and aluminium frame. Opening angle 190°.
- Swing handle with 2 locking points.
- Springswivel hinge system allows for quick installation / removal of the doors without tools.
- Rear steel panel with quick latch locks, key and pre-punched cable entry.
- Removable, sliding side panels. Can be removed when the RetO's are bayed together.
- 2 x adjustable multifunction members (1 each side).
- Top lid with ventilation areas, pre-punched cable entries and 1/4 turn locks.
- Injected ABS corner lids (8 in RetO Green (RAL6018). Black (RAL9005) optional).
- 4 x adjustable levelling feet.
- Distributed load capacity: 1,200Kg (static).
- Finishes: Black (RAL9005) powder coating. Light Grey (RAL7035) as an option.
- Delivery: Flat-Pack "All in one box".

### Cabinet Sizes

Width: 600mm

Depths & Heights

	18U	24U	30U	42U	47U
600mm	•	•	•	•	
800mm	•	•	•	•	•
1,000mm				•	•

### W800 (Flat-Pack)



Features the same basic specification as the RetO W600 but in an 800mm wide rack.

#### Cabinet Sizes

Width: 800mm

Depths & Heights

	30U	42U	47U
600mm	•	•	
800mm	•	•	•
1,000mm		•	•

### W600 Mesh Doors (Flat-Pack)



600mm wide rack, ideal for server & data centre installations, offering the same basic specification as the RetO W600 but with the following changes:

- Front & rear mesh doors (80% vented area). Opening angle 190°.

#### Cabinet Sizes

Width: 600mm

Depths & Heights

	24U	42U	47U
1,000mm	•	•	•
1,200mm		•	•

## Mesh Doors (Flat-Pack)



800mm wide rack, ideal for server & data centre installations, offering the same basic specification as the RetO W600 but with the following changes:

- Front & rear mesh doors (80% vented area). Opening angle 190°.
- Split style double doors available as an option.

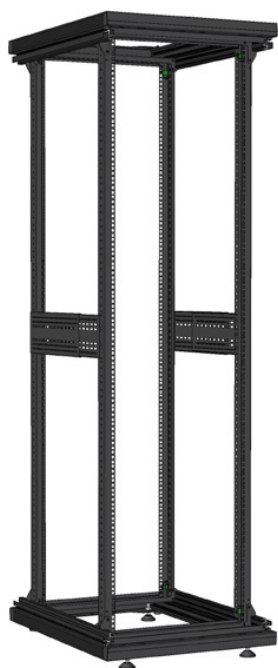
### Cabinet Sizes

Width: 800mm

Depths & Heights

	42U	47U
800mm	•	•
1,000mm	•	•
1,200mm	•	•

## (Flat-Pack)



RetO is available as a 600mm or 800mm frame only, the basic unit includes:

- Inner freestanding structure.
- Top & bottom side structure in aluminium profiles.
- 4x19" profiles adjustable in depths, manufactured from 2mm steel.
- 2 x adjustable multifunction members (1 each side).
- Top lid with ventilation areas, pre-punched cable entries and 1/4 turn locks.
- Injected ABS corner lids (8 in RetO Green (RAL6018). Black (RAL9005) optional).
- 4 x adjustable levelling feet.
- Distributed load capacity: 1.200 Kg (static).
- Finishes: Black (RAL9005) powder coating. Light Grey (RAL7035) as an option.
- Delivery: Flat-Pack "All in one box".

### Frame Sizes

Width: 600mm or 800mm

#### 600mm Wide

Depths & Heights

	42U	47U
600mm	•	
1,000mm	•	•

#### 800mm Wide

Depths & Heights

	42U	47U
800mm	•	
1,000mm	•	•